

# Advantages

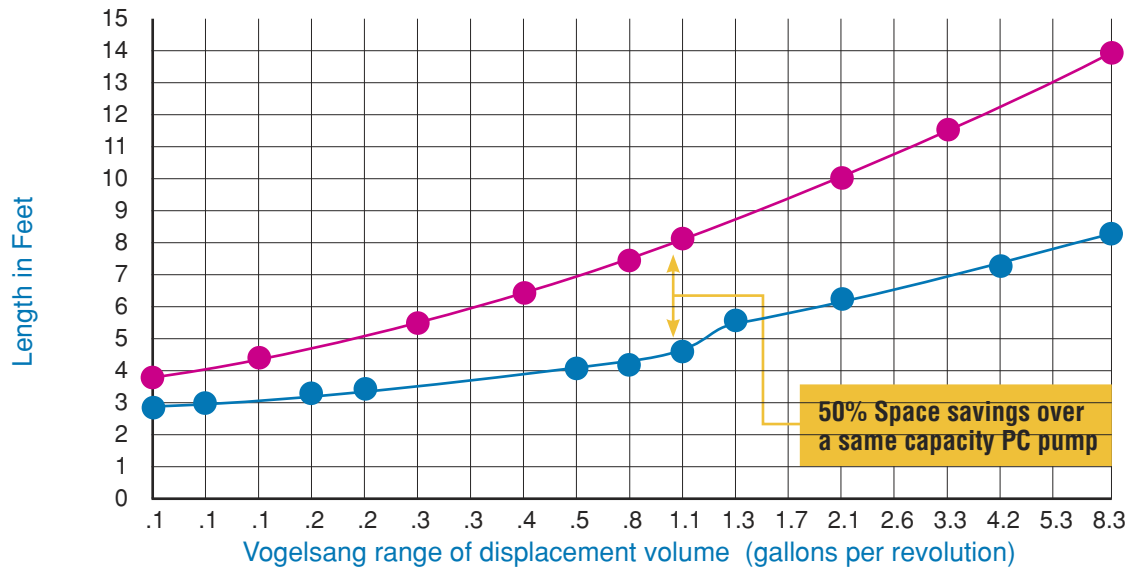


# VOGELSANG

## Sludge Pump Division

### Total length of direct coupled electric motor assembly

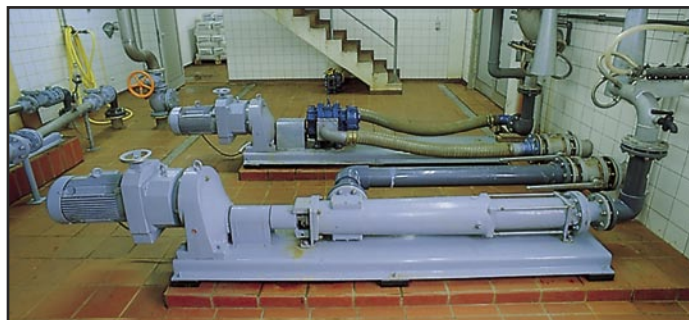
- Rotary Lobe Pump
- Progressing Cavity Pump



### Tech Tip

### Advantages of Vogelsang Rotary Lobe Pumps

Like progressing cavity pumps, rotary lobe pumps belong to the pump type known as positive displacement pumps. Due to its compact design, a rotary lobe pump can be advantageously used even for high discharge rates. In the following the special benefits of rotary pumps are described in comparison to progressing cavity pumps.



### Vogelsang HiFlo® Sludge Pump



### Small Overall Dimensions

The above photograph shows a rotary lobe pump in a size range of 130 GPM requires much less space than a PC pump of comparable capacity. This is not only valid for this particular size, but for larger pumps beyond 2 gal/rev the difference in length increases extremely.

Large PC-pumps waste up to 50% more space than rotary lobe pumps. Imagine the cost savings in a design build situation, if you could reduce the size of your pump room, air handlers, etc.

The chart above shows an overall comparison in total length, including an electric geared motor, between Vogelsang-pumps and PC pumps of a well known manufacturer. Over the whole range you will find that PC-pumps are 30 to 50% longer than a rotary lobe pump of the same size. The size here is read in terms of displacement volume (gal per revolution).

**For more information, visit our website at [www.vogelsangusa.com](http://www.vogelsangusa.com), to locate a local distributor, or contact Vogelsang direct at 800-984-9400.**

**Sludge Pumping, Macerating & Distributing Products**

**800 984 9400**  
**vogelsangusa.com**